

Disney
BEAUTY
AND THE
BEAST



ABOUT THE SHOW

A Brief History

The brainy and beautiful Belle yearns to escape her **provincial** life...and her brute of a suitor, Gaston. However, Belle gets more adventure than she wanted when she becomes captive in the Beast's enchanted castle after she bargains her freedom for that of her captured father! Through her journey in the castle, Belle learns of the Beast's past and the **consequences** of his actions. Dancing flatware, menacing wolves, and singing furniture fill the stage with thrills in this beloved fairy tale about very different people finding strength in one another and learning how to love.

Beauty and the Beast is based on a traditional French fairy tale that was first published in 1740. It was called *La Belle et la Bete* and was written by Gabrielle-Suzanne Barbot de Villeneuve. The original tale was extremely lengthy and had a complex storyline involving the **heroine**, Beauty (not Belle in the original) being 1 of 12 children. Beauty was the youngest of all the children. Beauty (Belle), however, has always been written as being a passionate, beautiful young woman who was well-read, kind, and pure of heart. However, her older sisters were all **vain**, selfish, cruel, and jealous of their youngest sister.

After Beauty's father, a merchant, loses their mansion in a fire and all his trading ships are robbed by pirates, he must move his entire family into a small cottage. Beauty vows to help make the move easier and to commit to a rural lifestyle with an **optimistic** outlook. While traveling home after a work trip, the merchant gets lost in a storm and takes shelter in what he believes is an abandoned castle. After spending the night inside to avoid the storm, he leaves the next morning to return home. On his way out of the castle he stops at the palace garden to pick roses for Beauty and is caught by the owner of the castle, Beast. The beast vows to let him go if he brings back 1 of his daughters to take his place. The man agrees and returns with his youngest the following day. Each day, Beauty explores the castle and finds new enchanted objects behind each door. There is even a magic window that lets Beauty view live stage performances every time she opens it. Each evening, the beast proposes marriage to Beauty only to be refused night after night. When she returns to her room each night, Beauty was always greeted by a fairy who keeps telling her to look beyond appearances.

Eventually, Beauty sees the Beast for the prince he is and the two fall in love. The original story explained how Beauty was actually a long-lost princess all along and that the two were destined to be together.

There have been many versions of the story since then, like Jean Cocteau's 1946 film. But perhaps no version has been as memorable as Walt Disney's animated 1991 movie. That movie went on to become a musical in 1993, and it ran at the Palace Theatre on Broadway for over 13 years. The Disney animated film spawned a live-action version in 2017 and a reimaged North American Tour by Disney Theatricals in the summer of 2025.

ACTIVITY PACKET

Words to Know

1. **Provincial (adjective)**
of or concerning the regions outside the capital city of a country, especially when regarded as unsophisticated or narrow-minded.
2. **Consequences (noun)**
a result or effect of an action or condition.
3. **Heroine (noun)**
a woman admired or idealized for her courage, outstanding achievements, or noble qualities.
4. **Vain (adjective)**
having or showing an excessively high opinion of one's appearance, abilities, or worth.
5. **Optimistic (adjective)**
hopeful and confident about the future.

Questions from the Reading

1. *Beauty and the Beast* is based on a traditional _____ fairytale.
 - a. Italian
 - b. American
 - c. French
 - d. Russian
2. In the original tale, what did Beauty's father do for work?
 - a. Inventor
 - b. Gardener
 - c. Chef
 - d. Merchant
3. In the original story, Beauty had many siblings. How many siblings were there total?
 - a. 6
 - b. 12
 - c. 9
 - d. 10
4. The 1991 animated movie was released by which animation company?
 - a. Disney
 - b. Amblin Films
 - c. DreamWorks
 - d. Pixar
5. Beauty's father finds the Beast's castle while he is _____.
 - a. Walking his dog.
 - b. Shopping in the market.
 - c. Lost in a storm.
 - d. Picking flowers.

ACTIVITY PACKET

Magical Verbs

Irregular Verbs are verbs that break the rules by not following the usual past participle tense and forms.

Regular verbs can be transformed into the past by adding “-ED” or “D” to the end of the verb. The word “Dance” would transform into the past “Dancedu” and the verb “Talk” would transform into “Talkedu”.

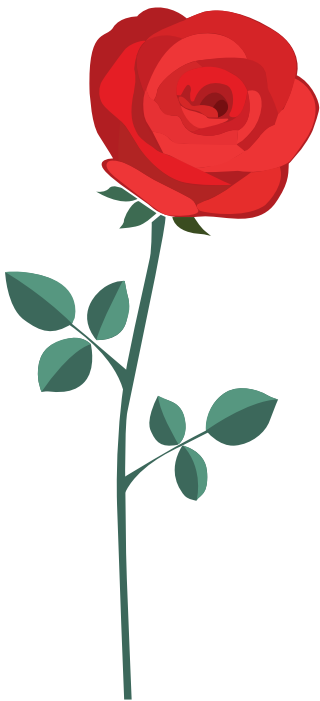
However, when it comes to the verb “Sing”, you can’t add “-ED” to it because “Singedu” is not a word. Therefore, “Sing” is an irregular verb and gets a new ending!

Let’s transform the word “sing” together! Read the sentence below and circle the best answer to complete the sentence.

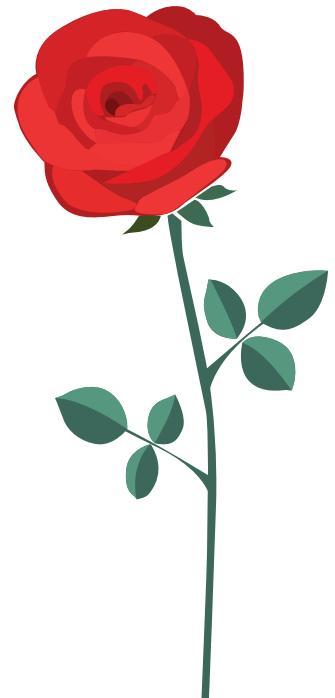
Beauty kept dreaming about how beautiful the dishes SING – SANG – SINGED at her magical dinner that night.

The correct answer is “SANG”

Now, transform the irregular verbs on the left with its magical past tense verb in the right column.



=	
IRREGULAR VERB	PAST TENSE VERB
FIND	DREW
BREAK	HID
BE	BROKE
DRINK	KNEW
DRAW	FOUND
HIDE	CAME
BUY	WERE
COME	DRANK
KNOW	FELL
FALL	BOUGHT



ACTIVITY PACKET

Belle's Homophone Quest

Belle's name is a homophone. That means it sounds like another word but is spelled differently and has a different meaning. The word "bell" sounds the same as "Belle", but it is spelled differently and has a different meaning.

Below is a list of words. Can you correctly spell the homophone that belongs with each word?

KNOW _____ (ex. NO)

RED _____

PEAR _____

NOT _____

AUNT _____

ATE _____

BLEW _____

MAID _____

Word Search

Lumière's Menu

Find all the words hidden below

Grey Stuff – Flatware - Candlestick - Soup – Napkin – Goblet – Dessert – Tea -Guest -Waiter

E	F	K	D	C	M	Q	V	J	K	K	T	U	N	F	M	N	U	Y	Q
B	H	J	K	F	N	E	H	B	L	H	X	D	L	X	Q	Q	X	D	L
I	T	H	O	T	V	P	S	W	Y	V	C	M	F	T	D	H	M	X	O
B	C	A	D	T	U	Q	I	B	E	D	I	S	I	G	K	G	B	B	T
K	Q	M	Y	S	I	U	K	N	Y	E	I	B	S	E	C	R	Q	E	G
I	G	S	Y	Y	Z	C	F	W	Q	S	A	G	W	Q	A	E	F	T	O
F	N	B	J	Q	N	Z	B	X	M	S	U	G	D	B	H	Y	L	O	B
H	F	M	F	M	X	U	S	U	V	E	K	D	F	C	O	S	P	P	L
P	O	W	L	C	X	Q	V	N	W	R	F	T	E	D	R	T	C	V	E
A	U	Q	A	A	P	O	T	U	Y	T	X	U	K	B	E	U	X	S	T
O	E	I	T	N	Y	T	Y	P	X	J	G	P	O	R	K	F	P	W	Y
R	C	E	W	D	T	E	Z	S	L	W	U	Q	F	N	X	F	X	Q	P
B	P	Y	A	L	B	A	W	Q	I	A	E	H	D	N	K	B	L	Q	M
O	S	Q	R	E	Q	G	H	O	I	I	S	J	N	A	P	K	I	N	C
A	P	T	E	S	C	F	V	S	E	T	T	J	S	O	U	P	P	S	H
G	A	O	Y	T	O	Y	O	V	Z	E	D	Y	C	Y	Y	Q	J	W	F
T	F	G	W	I	I	U	X	F	R	G	J	Q	T	H	X	M	U	Q	
X	M	N	P	C	W	E	W	C	K	H	Q	L	Y	J	P	T	D	T	D
G	I	F	P	K	Q	G	P	L	C	R	J	M	D	W	B	I	M	V	Z
L	S	B	H	B	P	T	N	D	R	U	A	B	R	Q	Z	B	I	R	D

ACTIVITY PACKET



ANSWER KEY

Questions from the Reading

1. C
2. D
3. B
4. A
5. C

Irregular past tense

FIND	DREW
BREAK	HID
BE	BROKE
DRINK	KNEW
DRAW	FOUND
HIDE	CAME
BUY	WERE
COME	DRANK
KNOW	FELL
FALL	BOUGHT

Word Search Key

```

E F K D C M Q V J K K T U N F M N U Y Q
B H J K F N E H B L H X D L X Q Q X D L
I T H O T V P S W Y V C M F T D H M X O
B C A D T U Q I B E D I S I G K G B B T
K Q M Y S I U K N Y E I B S E C R Q E G
I G S Y Y Z C F W Q S A G W Q A E F T O
F N B J Q N Z B X M S U G D B H Y L O B
H F M F M X U S U V E K D F C O S P P L
P O W L C X Q V N W R F T E D R T C V E
A U Q A A P O T U Y T X U K B E U X S T
O E I T N Y T Y P X J G P O R K F P W Y
R C E W D T E Z S L W U Q F N X F X Q P
B P Y A L B A W Q I A E H D N K B L Q M
O S Q R E Q G H O I I S J N A P K I N C
A P T E S C F V S E T T J S O U P P S H
G A O Y T O Y O V Z E D Y C Y Y Q J W F
T F G W I I U U X F R G J Q T H X M U Q
X M N P C W E W C K H Q L Y J P T D T D
G I F P K Q G P L C R J M D W B I M V Z
L S B H B P T N D R U A B R Q Z B I R D
  
```

Homophone Quest

KNOW - NO
 RED - READ
 PEAR - PAIR
 NOT - KNOT
 AUNT - ANT
 ATE - EIGHT
 BLEW - BLUE
 MAID - MADE

Standards

L.3.1 Demonstrate command of the conventions of standard English grammar and usage when writing or speaking.

- b. Form and use regular and irregular plural nouns.
- c. Use abstract nouns (e.g., childhood).
- d. Form and use regular and irregular verbs.
- e. Form and use the simple (e.g., I walked; I walk; I will walk) verb tenses.

RI.1.1: Ask and answer questions about key details in a text.

RL.3.1: Ask and answer questions to demonstrate understanding of a text, referring explicitly to the text as the basis for the answers.

L.4.1g Correctly use frequently confused words (e.g., to, too, two; there, their).

- a. Homophones with pictures (4-DD.1)
- b. Identify homophones (4-DD.2)
- c. Use the correct homophone (4-DD.3)